

OPTIKA®
MICROSCOPES
I T A L Y

IM-3 Series



Routine Lab Inverted Microscopes

Your Preferred Inverted Microscope for Routine

ROUTINE IN UNIVERSITIES, LABS & INDUSTRIES

- » Wide range to fulfill specific lab requirements
- » Valuable solutions for life and material sciences
- » Compliant with several observation methods

AN AFFORDABLE PARTNER WITH HIGH-END FEATURES

- » IOS LWD W-PLAN objectives for flat images on 22 mm FN
- » Fast, efficient investigation with no particular sample prep
- » Trinocular port with beam splitter for most light-demanding needs



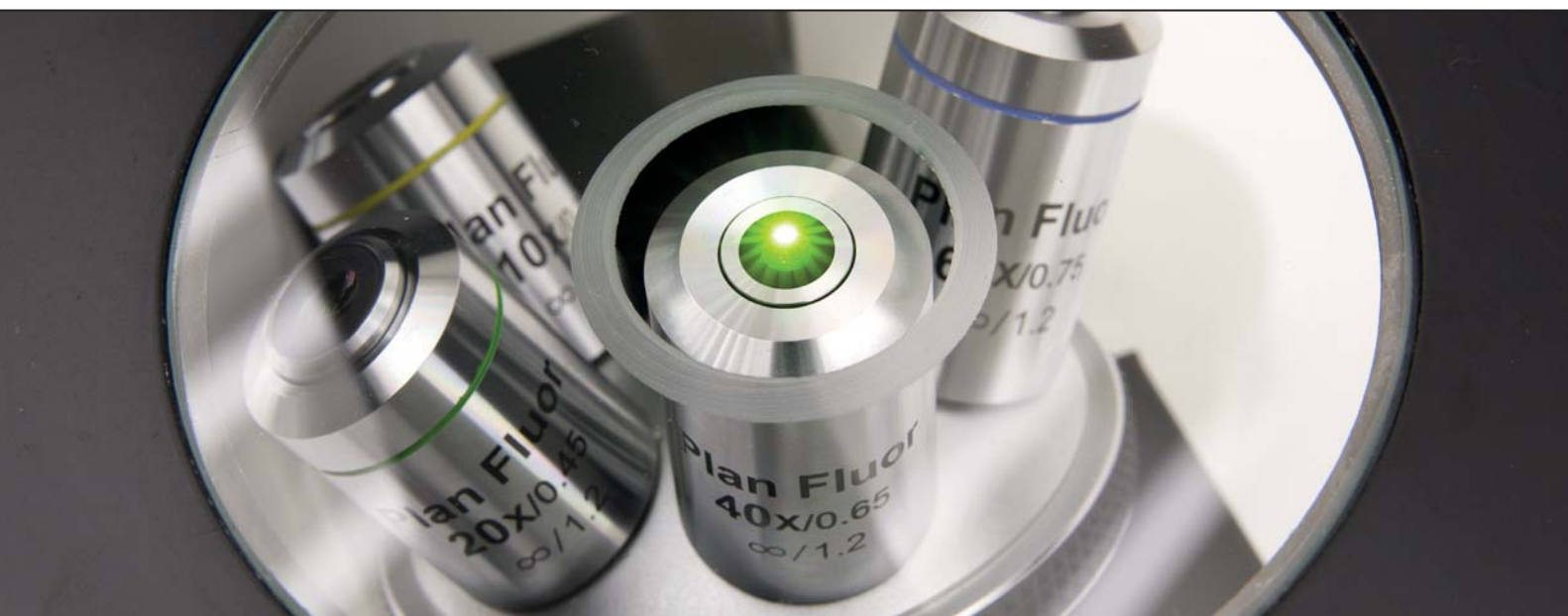
Optically Impressive

MAINTAINING GOOD EYESIGHT

- » 10x/22 eyepieces for large specimen view
- » Comfortable rubber cup to get rid of annoying external light
- » High eye-point for glasses wearers, dioptic adjustment (left eyepiece)

IM-3 & IOS W-PLAN: THE PERFECT COMBINATION

- » IOS Infinity corrected optical system
- » Full planarity optics on 22 mm (W-PLAN) according to ISO 19012-1
- » High-grade Semi-Apo lens available ideal for fluorescence



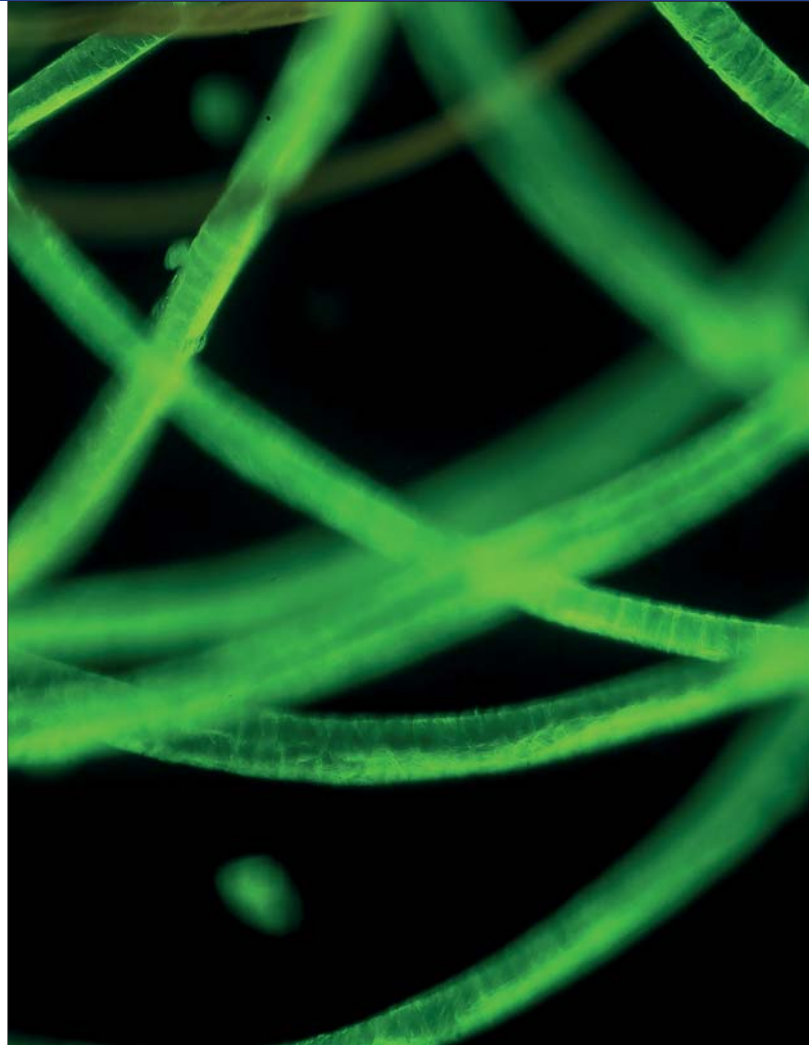
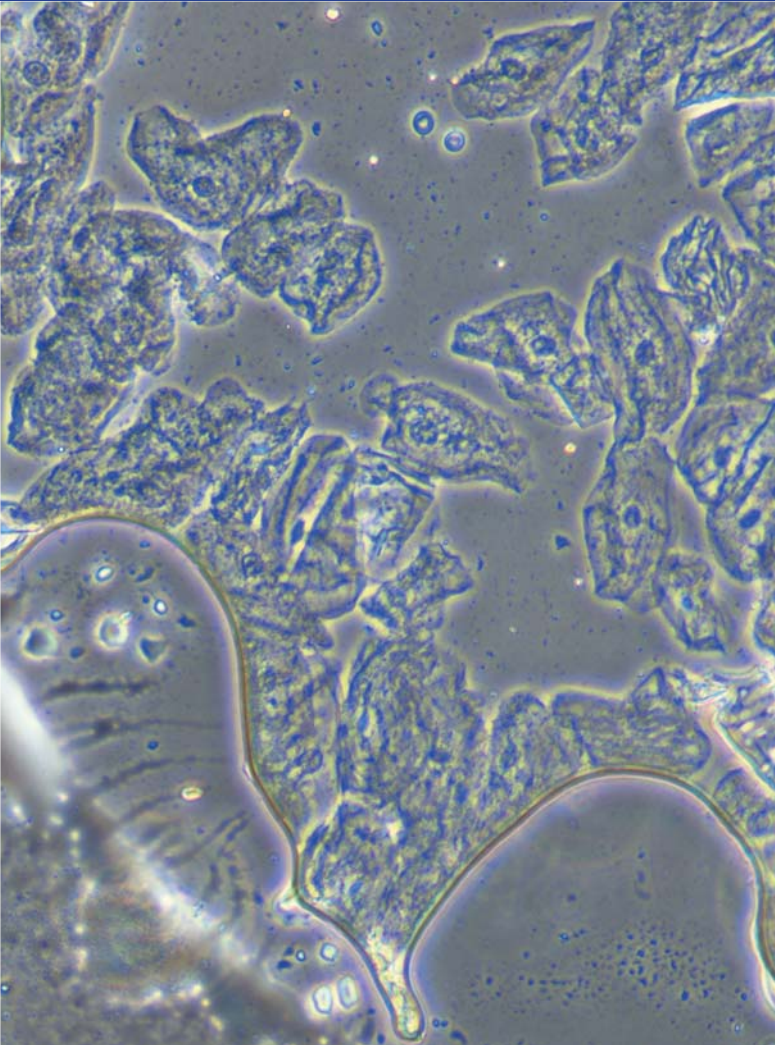
An Extensive Range of Different Configurations

OBSERVE EVEN THE MOST COMPLEX SAMPLES

- » Phase contrast lens for transparent sample examination
- » LED and HBO fluorescence available for specific purposes
- » High quality no cover glass objectives for material science

CONCEPTUAL INNOVATION IN LED FLUORESCENCE

- » Choose the lowest operational cost, LED lifetime of 65,000 hours
- » Immediate operation, eliminating warm-up/cool-down times
- » Forget about lamp centering, adjustment and maintenance

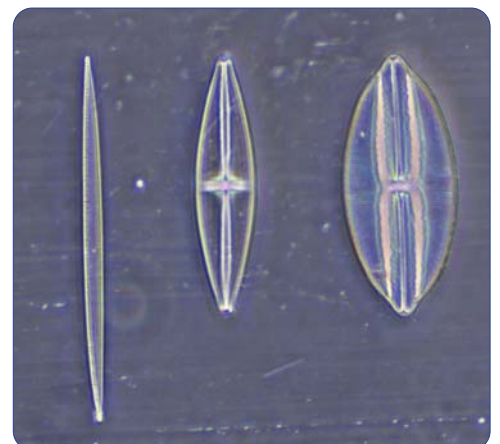


RPC - Relief Phase Contrast

RPC system is designed to increase visibility and contrast in unstained and living material by detecting optical gradients (or slopes) and converting them into variations of light intensity. Typical applications are transparent specimens, bacteria, tissue culture work, spermatozoa, cells in glass containers, protozoa, mites, fibers, etc.

When viewed under modulation contrast optics, transparent objects that are essentially invisible in ordinary brightfield microscopy take on an apparent three-dimensional appearance dictated by phase gradients in the specimen. There are also no halos exhibited in the image, unlike the images produced with phase contrast optics.

RPC is recommended over **DIC** technique in case of specimens like crystals (with effects upon polarized light), or contained in specimen carriers such as plastic culture vessels, Petri dishes, etc.



X-LED⁸ - Only Available at OPTIKA

STATE-OF-THE-ART ILLUMINATION SYSTEM

- » Uncomparable light intensity, exclusive lens & collector design
- » Constant pure-white color temperature at all intensity levels
- » Unmatched color fidelity, uniformity and brightness

CUT ELECTRICITY BILLS BY 90%

- » Money & energy saving, 8 W
- » More efficient brightness than a 100 W halogen lamp
- » LED long lifetime (65,000 hours = 22 years at 8 hours/day usage)



Multi-plug power supply

Go Digital - Vivid Colors & Contrast For Stunning Images

2

Laboratory

STAY CONNECTED WITH YOUR SPECIMEN, EASILY

- » Trinocular port to be always updated with the latest technology cameras, even in the future
- » Wide range of cameras matching all the needs, including the more specific ones
- » Modern C-mount focusable professional adapters for all kinds of cameras

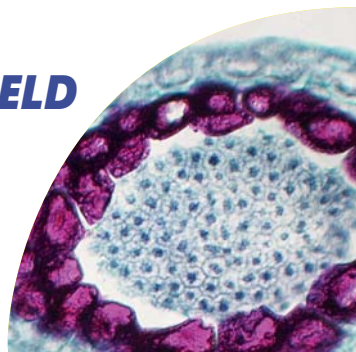
PROFESSIONAL IMAGE ANALYSIS

- » Multi-language software for live-view, picture and video in different file formats
- » Advanced functions for pictures processing (EDF, stitching, multi-fluorescence combine)
- » Powerful tools to perform measurements and generate custom reports

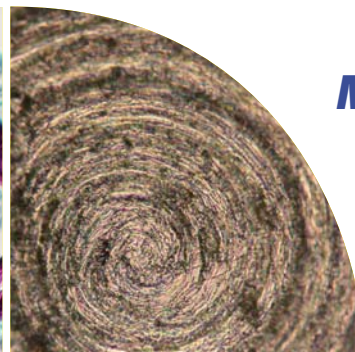


Multiple Observation Methods

BRIGHTFIELD



METALLOGRAPHY



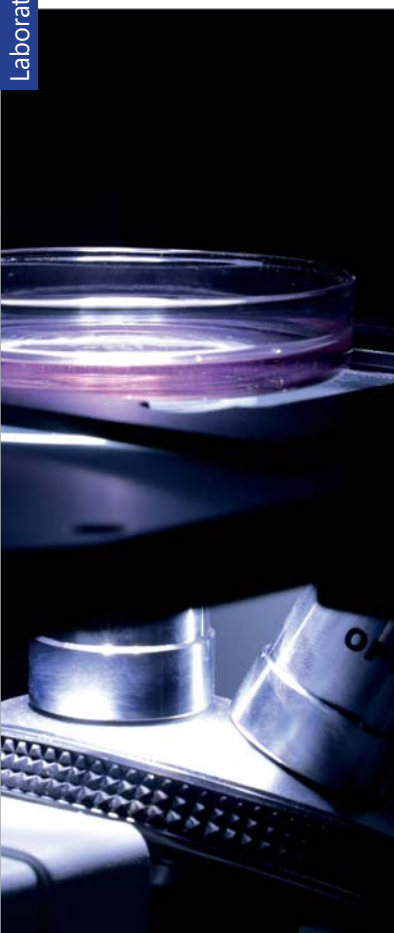
FLUORESCENCE



PHASE CONTRAST



IM-3 Series



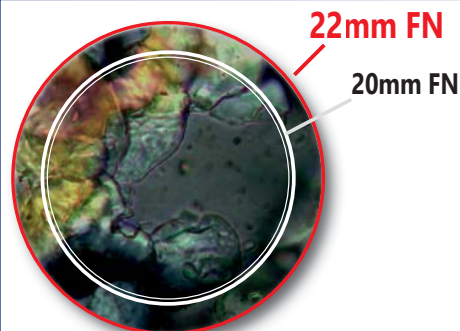
Inverted microscopes are useful for observing living cells or organisms at the bottom of a large container (e.g., a tissue culture flask) under more natural conditions than on a glass slide, as it occurs with a conventional microscope. IM-3 Series is engineered and designed to be your ideal solution for fast and reliable routine inspections, with the exclusive, state-of-the-art X-LED[®] illumination system. A particularly simple and ingenious optical design allows stable alignments and smooth and accurate movements. OPTIKA provides different configurations, including the innovative LED fluorescence technology for a new, enhanced experience.

X-LED[®] Exclusive Lighting Source

Special technology able to double the light intensity for incomparable performance, ensuring constant pure-white colour temperature (6,300K colour temperature).

Relevant money and energy saving thanks to the incredibly low energy consumptions which allows you to cut the electricity bills by 90%!

The electric consumption (8 W only) proves the high efficiency of this system: incredibly high light intensity combined with low consumption.



Large Specimen View (22 mm Field Number)

The **F.O.V.** (field of view) is based on a comfortable diameter of 22 mm.

This means that an extra wide area of the sample can be inspected and allows a natural and easy view, particularly needed in a laboratory environment.

In fluorescence we can offer several options.

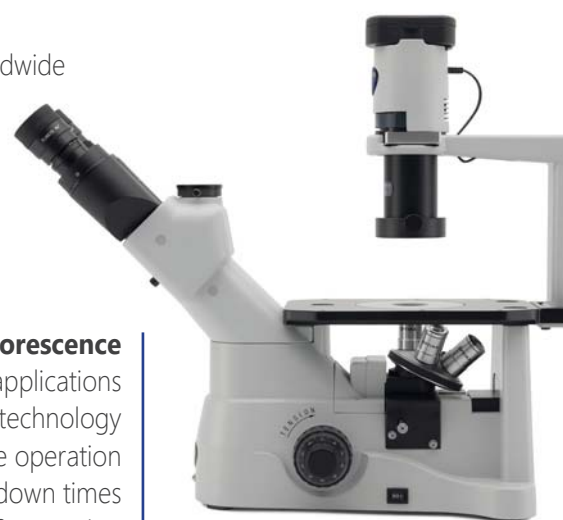
According to your application and to the fluorochromes you are using, we can help you to identify the best light source.

Traditional, HBO Fluorescence

- » The most used and diffused method, worldwide
- » Wide spectrum range for future upgrades

Innovative, LED Fluorescence

- » Recommended for routine applications
- » Cost-effective, money saving technology
 - » Ready for immediate operation
 - » Eliminate warm-up/cool-down times
 - » Forget lamp replacement & centering



Routine Lab Inverted Microscopes

Get the most out of our accessories



DESIGNED TO FACILITATE YOUR DAILY ROUTINE

- » Removable condenser to increase the working distance
- » Mechanical stage and side extensions for great comfort (as optional)
- » Different inserts available according to the container used (as optional)



M-793.1
Holder for Petri diameter 38mm (M-793.2 needed).



M-793.2
Holder for Terasaki and Petri diameter 65mm.



M-793.3
Holder for slide and Petri diameter 54mm.



M-793.4
Holder for 2+2 slides.



M-793.5
Holder for metallurgical samples
(only for IM-3MET).



M-793.6
Holder for Utermöhl-Chamber (M-793.3 needed).



M-793.7
Load-bearing side extension.



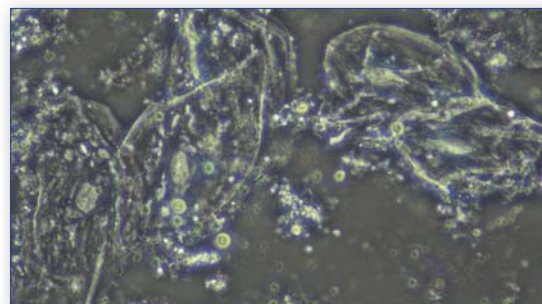
M-792 (M-792.2 for IM-3LD2 only)
Mechanical stage.

IM-3 - Brightfield & Phase Contrast Microscope

IM-3 looks at the challenge of the future with confidence, offering first-class optical quality and mechanical versatility, to extend its use with several accessories. Ensuring top-level brightfield and phase contrast observation, as it comes with a set of 3 IOS LWD W-PLAN PH objectives (10x, 20x and 40x).

The high-efficiency **X-LED[®]** makes it reliable for all transmitted light observations.

For a more complete solution, choose among the several accessories available (objectives, translating stage, side extensions, holders and stage inserts).



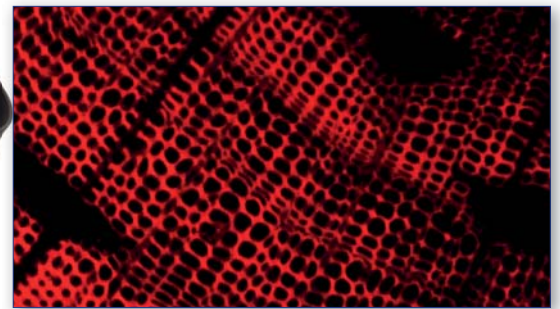
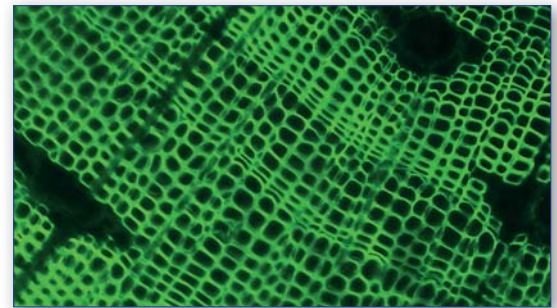
| Part | Description |
|---------------------------------|---|
| Observation mode: | Brightfield, phase contrast. |
| Head: | Trinocular (2-position 100/0, 50/50), 45° inclined. |
| Interpupillary distance: | Adjustable between 50 and 75 mm. |
| Dioptric adjustment: | On the left eyepiece tube. |
| Eyepieces: | WF10x/22 mm, high eye-point and with rubber cups. |
| Nosepiece: | Quintuple revolving nosepiece, rotation on ball bearings. |
| Objectives: | IOS LWD W-PLAN PH 10x/0.25 IOS LWD W-PLAN PH 20x/0.40 IOS LWD W-PLAN PH 40x/0.65 All with anti-fungus treatment. |

| Part | Description |
|----------------------------------|---|
| Specimen stage: | Fixed stage, 250x160 mm, with glass and metal stage inserts. |
| Focusing: | Coaxial coarse (adjustable tension) and fine focusing mechanism with limit stop to prevent the contact between objective and specimen. |
| Condenser: | LWD pre-centered condenser, N.A. 0.30, W.D. 72 mm. With 4x/10x, 20x/40x phase contrast slider and brightfield. Removable to extend the working distance up to 150 mm. |
| Transmitted illumination: | X-LED [®] with white 8 W LED (6,300K) with brightness control. With aperture diaphragm. Multi-plug 100-240Vac/6Vdc external power supply. |

IM-3F - HBO Fluorescence Microscope

Routine inverted fluorescence microscope for transmitted brightfield, phase contrast and fluorescence observations with IOS LWD W-PLAN objectives. The HBO fluorescence illuminator is combined with blue and green excitation filter set for the visualization of the following fluorochromes: Acridine Yellow, Acridine Orange, Auramine, DiO, DTAF, FITC, GFP, YFP, etc. (blue) plus Rhodamine, Texas Red and TRITC (green). Transmitted light through the exclusive **X-LED[®]** to ensure great-looking, rich and high-quality specimen view.

-  22
- 
- 
-  X-LED[®]
-  IOS
-  W-PLAN
-  FL
-  PH
- 



Standard filtersets

| Name | Excitation filter (nm) | Dichroic mirror cut-off (nm) | Emission filter (nm) |
|-----------|------------------------|------------------------------|----------------------|
| B (Blue) | 450 – 490 | 495 | 520LP |
| G (Green) | 527 – 553 | 565 | 575LP |

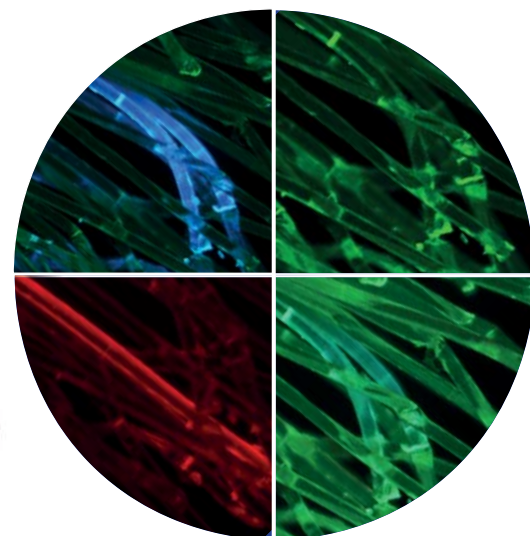


| Part | Description |
|-------------------------------------|--|
| Observation mode: | Brightfield, phase contrast, HBO fluorescence. |
| Epi-illumination and filter: | HBO 100 W high pressure mercury lamp. 3-position filter holder; blue & green included. |
| Head: | Trinocular (2-position 100/0, 0/100), 45° inclined. |
| Interpupillary distance: | Adjustable between 50 and 75 mm. |
| Dioptric adjustment: | On the left eyepiece tube. |
| Eyepieces: | WF10x/22 mm, high eye-point and with rubber cups. |
| Nosepiece: | Quintuple revolving nosepiece, rotation on ball bearings. |
| Objectives: | IOS LWD W-PLAN 4x/0.13 IOS LWD W-PLAN PH 10x/0.25 IOS LWD W-PLAN PH 20x/0.40 IOS LWD W-PLAN 40X/0.60 All with anti-fungus treatment. |

| Part | Description |
|----------------------------------|---|
| Specimen stage: | Fixed stage, 250x160 mm, with glass and metal stage inserts. |
| Focusing: | Coaxial coarse (adjustable tension) and fine focusing mechanism with limit stop to prevent the contact between objective and specimen. |
| Condenser: | LWD pre-centered condenser, N.A. 0.30, W.D. 72 mm. With 4x/10x, 20x/40x phase contrast slider and brightfield. Removable to extend the working distance up to 150 mm. |
| Transmitted illumination: | X-LED [®] with white 8 W LED (6,300K) with brightness control. With aperture diaphragm. Multi-plug 100-240Vac/6Vdc external power supply. |

IM-3FL4 - HBO Fluorescence Microscope

Advanced inverted microscope for brightfield and fluorescence observations with Semi-Apo IOS LWD U-PLAN F objectives to enhance the visibility of the sample and increase the overall contrast. The HBO fluorescence illuminator provides an outstanding flexibility of use, standing the blue and green filter sets (supplied as standard) for Auramine, FITC, GFP and YFP (with blue filter set) plus Rhodamine, Texas Red and TRITC (with the green one), yet giving the possibility to combine any other specific filter sets for future upgrade. Transmitted light through the exclusive **X-LED⁸** to ensure great-looking, rich and high-quality specimen view.



Standard filterset

| Name | Excitation filter (nm) | Dichroic mirror cut-off (nm) | Emission filter (nm) |
|---------|------------------------|------------------------------|----------------------|
| B Blue | 460 - 490 | 500 | 520LP |
| G Green | 527 - 553 | 565 | 575LP |

Additional filterset (optional)

| Name | Excitation filter (nm) | Dichroic mirror cut-off (nm) | Emission filter (nm) |
|------------|------------------------|------------------------------|----------------------|
| V (Violet) | 390 - 420 | 440 | 455LP |
| UV | 325 - 375 | 415 | 435LP |

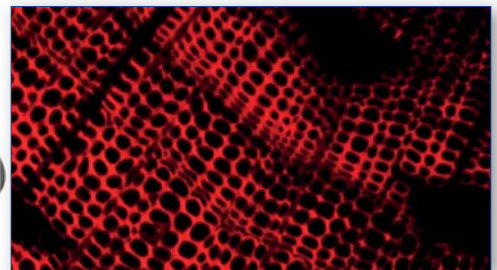
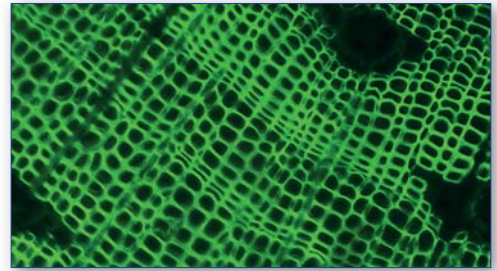


| Part | Description |
|-------------------------------------|--|
| Observation mode: | Brightfield, HBO fluorescence. |
| Epi-illumination and filter: | HBO 100 W high pressure mercury lamp. 4-position filter holder; blue & green included. |
| Head: | Trinocular (2-position 100/0, 0/100), 45° inclined. |
| Interpupillary distance: | Adjustable between 50 and 75 mm. |
| Dioptric adjustment: | On the left eyepiece tube. |
| Eyepieces: | WF10x/22 mm, high eye-point and with rubber cups. |
| Nosepiece: | Quintuple revolving nosepiece, rotation on ball bearings. |
| Objectives: | IOS LWD U-PLAN F 10x/0.30 IOS LWD U-PLAN F 20x/0.45 IOS LWD U-PLAN F 40x/0.65 All with anti-fungus treatment. |

| Part | Description |
|----------------------------------|--|
| Specimen stage: | Fixed stage, 250x160 mm, with glass and metal stage inserts. |
| Focusing: | Coaxial coarse (adjustable tension) and fine focusing mechanism with limit stop to prevent the contact between objective and specimen. |
| Condenser: | LWD pre-centered condenser, N.A. 0.30, W.D. 72 mm. Removable to extend the working distance up to 150 mm. |
| Transmitted illumination: | X-LED ⁸ with white 8 W LED (6,300K) with brightness control. With aperture diaphragm. Multi-plug 100-240Vac/6Vdc external power supply. |

IM-3LD2 - LED Fluorescence Microscope

Routine inverted fluorescence microscope for transmitted brightfield, phase contrast and fluorescence observations with IOS LWD W-PLAN PH objectives. The LED fluorescence illuminators are combined with blue and green excitation filter set for the visualization of the following fluorochromes: Acridine Yellow, Acridine Orange, Auramine, DiO, DTAF, FITC, GFP, YFP, etc. (blue) plus Rhodamine, Texas Red and TRITC (green). LED fluorescence ensures unparalleled convenience eliminating warm-up/cool-down times and all the inconveniences related lamp replacement and adjustment. Transmitted light through the exclusive **X-LED[®]** to ensure great-looking, rich and high-quality specimen view.



A new milestone achieved in Fluorescence Microscopy

- » 10% higher light intensity than HBO
- » 35% higher light intensity than Metal-Halide
- » Adjustable light intensity
- » The selection of filtersets automatically involves the switching on of the corresponding LEDs
- » Recommended for routine applications
- » Cost-effective, money saving technology
- » Ready for immediate operation
- » Eliminate warm-up/cool-down times
- » Forget lamp replacement & centering

LED Fluorescence Cubes (LED + Filterset) included

| Name | LED emission (nm) | Excitation filter (nm) | Dichroic mirror cut-off (nm) | Emission filter (nm) |
|-------|-------------------|------------------------|------------------------------|----------------------|
| Blue | 460 | 455 - 495 | 500 | 510LP |
| Green | 523 | 510 - 550 | 570 | 575LP |

| Part | Description |
|-------------------------------------|---|
| Observation mode: | Brightfield, phase contrast, LED fluorescence. |
| Epi-illumination and filter: | High-power LED with brightness control. 3-position filter holder; blue and green filtersets included. |
| Head: | Trinocular (2-position 100/0, 50/50), 45° inclined. |
| Interpupillary distance: | Adjustable between 50 and 75 mm. |
| Dioptric adjustment: | On the left eyepiece tube. |
| Eyepieces: | WF10x/22 mm, high eye-point and with rubber cups. |
| Nosepiece: | Quintuple revolving nosepiece, rotation on ball bearings. |
| Objectives: | IOS LWD W-PLAN PH 10x/0.25 IOS LWD W-PLAN PH 20x/0.40 IOS LWD W-PLAN PH 40x/0.65 All with anti-fungus treatment. |

| Part | Description |
|----------------------------------|---|
| Specimen stage: | Fixed stage, 250x160 mm, with glass and metal stage inserts. Mechanical stage as option. |
| Focusing: | Coaxial coarse (adjustable tension) and fine focusing mechanism with limit stop to prevent the contact between objective and specimen. |
| Condenser: | LWD pre-centered condenser, N.A. 0.30, W.D. 72 mm. With 4x/10x, 20x/40x phase contrast slider and brightfield. Removable to extend the working distance up to 150 mm. |
| Transmitted illumination: | X-LED [®] with white 8 W LED (6,300K) with brightness control. With aperture diaphragm. 100-240Vac/12Vdc external power supply. |

IM-3LD4 - LED Fluorescence Microscope

Advanced fluorescence inverted microscope for transmitted brightfield and fluorescence observations with IOS LWD U-PLAN F objectives. The extremely powerful LED Fluorescence Illuminators are combined with corresponding excitation filter sets for the visualization of most fluorochromes. LED fluorescence ensures unparalleled convenience eliminating warm-up/cool-down times and all the inconveniences related lamp replacement and adjustment. Transmitted light through the exclusive **X-LED[®]** to ensure great-looking, rich and high-quality specimen view.



A new milestone achieved in Fluorescence Microscopy

- » Full-modular Fluorescence System
- » Interchangeable LED-Filtersets
- » 4 LED-Filtersets slots
- » 10% higher light intensity than HBO
- » 35% higher light intensity than Metal-Halide
- » Adjustable light intensity
- » The selection of filtersets automatically involves the switching on of the corresponding LEDs
- » Recommended for research applications
- » Cost-effective, money saving technology
- » Ready for immediate operation
- » Eliminate warm-up/cool-down times
- » Forget lamp replacement & centering

LED Fluorescence Cubes available (LED + Filterset)

| Name | LED emission (nm) | Excitation filter (nm) | Dichroic mirror cut-off (nm) | Emission filter (nm) |
|------------------------------|-------------------|------------------------|------------------------------|----------------------|
| M-1230 - Blue | 460 | 455 - 495 | 500 | 510LP |
| M-1230.1 - Blue (pass band) | 460 | 455 - 495 | 500 | 518-542 |
| M-1231 - Green | 523 | 510 - 550 | 570 | 575LP |
| M-1231.1 - Green (pass band) | 523 | 510 - 550 | 570 | 585-625 |
| M-1232 - Violet | 405 | 390 - 420 | 440 | 450LP |
| M-1233 - UV | 365 | 325 - 375 | 415 | 435LP |
| M-1233.1 - UV (pass band) | 365 | 340 - 390 | 405 | 420-470 |
| M-1234 - Red 1 | 623 | 590 - 650 | 660 | 665LP |
| M-1235 - Red 2 | 623 | 595 - 645 | 655 | 665 - 715 |
| M-1236 - Deep Red | 660 | 623 - 678 | 685 | 690 - 750 |
| M-1237 - Far Red | 740 | 720 - 760 | 770 | 780LP |
| M-1238 - Amber | 590 | 582 - 603 | 610 | 615 - 645 |

| Part | Description |
|-------------------------------------|--|
| Observation mode: | Brightfield, LED fluorescence. |
| Epi-illumination and filter: | High -Power LED with brightness control. 4-position filter holder; none included. |
| Head: | Trinocular (2-position 100/0, 50/50), 45° inclined. |
| Interpupillary distance: | Adjustable between 50 and 75 mm. |
| Dioptric adjustment: | On the left eyepiece tube. |
| Eyepieces: | WF10x/22 mm, high eye-point and with rubber cups. |
| Nosepiece: | Quintuple revolving nosepiece, rotation on ball bearings. |
| Objectives: | IOS LWD U-PLAN F 10x/0.30 IOS LWD U-PLAN F 20x/0.45 IOS LWD U-PLAN F 40x/0.65 All with anti-fungus treatment. |

| Part | Description |
|----------------------------------|---|
| Specimen stage: | Mechanical stage, 250x290 mm, with glass and metal stage inserts for slides and 54mm dia. Petri dishes. |
| Focusing: | Coaxial coarse (adjustable tension) and fine focusing mechanism with limit stop to prevent the contact between objective and specimen. |
| Condenser: | LWD pre-centered condenser, N.A. 0.30, W.D. 72 mm. Removable to extend the working distance up to 150 mm. |
| Transmitted illumination: | X-LED [®] with white 8 W LED (6,300K) with brightness control. With aperture diaphragm. Multi-plug 100-240Vac/12Vdc external power supply. |

IM-3LD4D - LED Fluorescence Microscope

Advanced fluorescence inverted microscope for transmitted brightfield and fluorescence observations with IOS LWD U-PLAN F objectives. The extremely powerful LED Fluorescence Illuminators are combined with corresponding excitation filter sets for the visualization of most fluorochromes. LED fluorescence ensures unparalleled convenience eliminating warm-up/cool-down times and all the inconveniences related lamp replacement and adjustment. Transmitted light through the exclusive **X-LED[®]** to ensure great-looking, rich and high-quality specimen view. This model is equipped with an Intel micro PC, a 12" screen, a 6Mpx high-sensitivity color camera, Optika ProView image analysis software for fluorescence and wireless mouse and keyboard.



A new milestone achieved in Fluorescence Microscopy

- » Full-modular Fluorescence System
- » Interchangeable LED-Filtersets
- » 4 LED-Filtersets slots
- » 10% higher light intensity than HBO
- » 35% higher light intensity than Metal-Halide
- » Adjustable light intensity
- » The selection of filtersets automatically involves the switching on of the corresponding LEDs
- » Recommended for research applications
- » Cost-effective, money saving technology
- » Ready for immediate operation
- » Eliminate warm-up/cool-down times
- » Forget lamp replacement & centering

LED Fluorescence Cubes available (LED + Filterset)

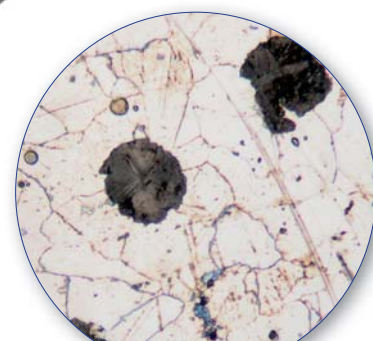
| Name | LED emission (nm) | Excitation filter (nm) | Dichroic mirror cut-off (nm) | Emission filter (nm) |
|------------------------------|-------------------|------------------------|------------------------------|----------------------|
| M-1230 - Blue | 460 | 455 - 495 | 500 | 510LP |
| M-1230.1 - Blue (pass band) | 460 | 455 - 495 | 500 | 518-542 |
| M-1231 - Green | 523 | 510 - 550 | 570 | 575LP |
| M-1231.1 - Green (pass band) | 523 | 510 - 550 | 570 | 585-625 |
| M-1232 - Violet | 405 | 390 - 420 | 440 | 450LP |
| M-1233 - UV | 365 | 325 - 375 | 415 | 435LP |
| M-1233.1 - UV (pass band) | 365 | 340 - 390 | 405 | 420-470 |
| M-1234 - Red 1 | 623 | 590 - 650 | 660 | 665LP |
| M-1235 - Red 2 | 623 | 595 - 645 | 655 | 665 - 715 |
| M-1236 - Deep Red | 660 | 623 - 678 | 685 | 690 - 750 |
| M-1237 - Far Red | 740 | 720 - 760 | 770 | 780LP |
| M-1238 - Amber | 590 | 582 - 603 | 610 | 615 - 645 |

| Part | Description |
|-------------------------------------|--|
| Observation mode: | Brightfield, LED fluorescence. |
| Epi-illumination and filter: | High -Power LED with brightness control. 4-position filter holder; none included. |
| Head: | Trinocular (2-position 100/0, 50/50), 45° inclined. |
| Interpupillary distance: | Adjustable between 50 and 75 mm. |
| Dioptric adjustment: | On the left eyepiece tube. |
| Eyepieces: | WF10x/22 mm, high eye-point and with rubber cups. |
| Nosepiece: | Quintuple revolving nosepiece, rotation on ball bearings. |
| Objectives: | IOS LWD U-PLAN F 10x/0.30 IOS LWD U-PLAN F 20x/0.45 IOS LWD U-PLAN F 40x/0.65 All with anti-fungus treatment. |

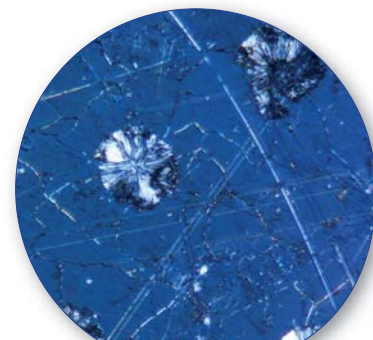
| Part | Description |
|----------------------------------|--|
| Specimen stage: | Mechanical stage, 250x290 mm, with glass and metal stage inserts for slides and 54mm dia. Petri dishes. |
| Focusing: | Coaxial coarse (adjustable tension) and fine focusing mechanism with upper limit stop. |
| Condenser: | LWD pre-centered condenser, N.A. 0.30, W.D. 72 mm. Removable to extend the working distance up to 150 mm. |
| Transmitted illumination: | X-LED [®] with white 8 W LED (6,300K) with brightness control. With aperture diaphragm. Multi-plug 100-240Vac/12Vdc external power supply. |
| Digital equipment: | Intel micro PC with Image analysis software for Fluorescence. 12" screen; 6Mpx high-sensitivity color camera. Supplied with wireless mouse & keyboard. |

IM-3MET- Metallurgical Microscope

Routine inverted microscope with IOS LWD U-PLAN MET objectives for material science and metallographic applications, combining a sturdy yet compact structure with dedicated components required in this field, like the NCG (no cover glass) objectives working without cover slide ideal for metallographic samples and other opaque specimens. A particularly simple and ingenious optical design allows stable alignments and smooth and accurate movements.



CAST IRON
BRIGHTFIELD



CAST IRON
POLARIZED LIGHT

| Part | Description |
|---|---|
| Observation mode: | Brightfield, simple polarized light on incident light. |
| Epi-illumination and polarizing filters: | Halogen 12 V/50 W with brightness control. With aperture and field (centrable) diaphragms. With polarizer and analyzer. |
| Head: | Trinocular (2-position 100/0, 50/50), 45° inclined. |
| Interpupillary distance: | Adjustable between 50 and 75 mm. |
| Dioptric adjustment: | On the left eyepiece tube. |
| Eyepieces: | WF10x/22 mm, high eye-point and with rubber cups. |
| Nosepiece: | Quintuple revolving nosepiece, rotation on ball bearings. |

| Part | Description |
|------------------------|--|
| Objectives: | IOS LWD U-PLAN MET 5x/0.15 IOS LWD U-PLAN MET 10x/0.30 IOS LWD U-PLAN MET 20x/0.45 IOS LWD U-PLAN MET 50x/0.55 All with anti-fungus treatment. |
| Specimen stage: | Fixed stage, 250x160 mm, with metal stage insert. |
| Focusing: | Coaxial coarse (adjustable tension) and fine focusing mechanism with limit stop to prevent the contact between objective and specimen. |

IM-3METLD- Metallurgical Microscope

LED routine inverted microscope with IOS LWD U-PLAN MET objectives for material science and metallographic applications, combining a sturdy yet compact structure with dedicated components required in this field, like the NCG (no cover glass) objectives working without cover slide ideal for metallographic samples and other opaque specimens. A particularly simple and ingenious optical design allows stable alignments and smooth and accurate movements. This model is equipped with an 18W LED lighting system.



- 22
-
-
-
-
-



| Part | Description |
|---|--|
| Observation mode: | Brightfield, simple polarized light on incident light. |
| Epi-illumination and polarizing filters: | LED 18 W with brightness control. With aperture and field (centrable) diaphragms. With polarizer and analyzer. |
| Head: | Trinocular (2-position 100/0, 50/50), 45° inclined. |
| Interpupillary distance: | Adjustable between 50 and 75 mm. |
| Dioptric adjustment: | On the left eyepiece tube. |
| Eyepieces: | WF10x/22 mm, high eye-point and with rubber cups. |
| Nosepiece: | Quintuple revolving nosepiece, rotation on ball bearings. |

| Part | Description |
|------------------------|--|
| Objectives: | IOS LWD U-PLAN MET 5x/0.15 IOS LWD U-PLAN MET 10x/0.30 IOS LWD U-PLAN MET 20x/0.45 IOS LWD U-PLAN MET 50x/0.55 All with anti-fungus treatment. |
| Specimen stage: | Fixed stage, 250x160 mm, with metal stage insert. |
| Focusing: | Coaxial coarse (adjustable tension) and fine focusing mechanism with limit stop to prevent the contact between objective and specimen. |

IM-3 Series - Comparison chart

Common features:

- **Head:** Trinocular (2-position), 45° inclined.
- **Eyepieces:** WF10x/22mm, high eye-point.
- **Nosepiece:** Quintuple, reversed, on ball bearings.
- **Stage:** Fixed, 250x160 mm (mechanical stage and side extension available as accessories).
- **Focusing mechanism:** Coaxial coarse (adjustable tension) and fine focusing mechanism with limit stop to prevent the contact between objective and specimen.

| Model | Type | Objectives | Condenser | Incident illumination | Fluorescence slider | Transmitted illumination |
|------------------|------------|--------------------------------------|--------------------------------|---|---------------------|---|
| IM-3 | BF, PH | IOS LWD W-PLAN PH 10x, 20x, 40x | LWD, N.A. 0.30, iris diaphragm | - | - | 8 W X-LED [®] , brightness control |
| IM-3F | BF, FL, PH | IOS LWD W-PLAN 4x, 10xPH, 20PH, 40x | LWD, N.A. 0.30, iris diaphragm | FL HBO with blue and green filtersets | 2-position +BF | 8 W X-LED [®] , brightness control |
| IM-3FL4 | BF, FL | IOS LWD U-PLAN F 10x, 20x, 40x | LWD, N.A. 0.30, iris diaphragm | FL HBO with blue and green filtersets | 3-position +BF | 8 W X-LED [®] , brightness control |
| IM-3LD2 | BF, FL, PH | IOS LWD W-PLAN PH 10x, 20x, 40x | LWD, N.A. 0.30, iris diaphragm | FL LED with blue and green filtersets | 2-position +BF | 8 W X-LED [®] , brightness control |
| IM-3LD4 | BF, FL | IOS LWD U-PLAN F 10x, 20x, 40x | LWD, N.A. 0.30, iris diaphragm | LED Fluorescence Cubes as optional | 4-position | 8 W X-LED [®] , brightness control |
| IM-3LD4D | BF, FL | IOS LWD U-PLAN F 10x, 20x, 40x | LWD, N.A. 0.30, iris diaphragm | LED Fluorescence Cubes as optional | 2-position | 8 W X-LED [®] , brightness control |
| IM-3MET | MET | IOS LWD U-PLAN MET 5x, 10x, 20x, 50x | - | Halogen bulb, 12 V/50 W, brightness control | - | - |
| IM-3METLD | MET | IOS LWD U-PLAN MET 5x, 10x, 20x, 50x | - | LED 18 W, brightness control | - | - |

IM-3 Series - Optical performance

IM-3 / IM-3LD2 / IM-3F

| Eyepiece | | 10x (M-780) | | |
|-------------------|------|-------------|---------------------|--------------------|
| Field number (mm) | 22 | | | |
| Objective | N.A. | W.D. (mm) | Total magnification | Field of view (mm) |
| 4x | 0.13 | 10.40 | 40x | 5.50 |
| 10x PH | 0.25 | 7.30 | 100x | 2.20 |
| 20x PH | 0.40 | 6.80 | 200x | 1.10 |
| 40x PH | 0.60 | 3.00 | 400x | 0.55 |
| 60x | 0.70 | 1.70 | 600x | 0.37 |

IM-3FL4 / IM-3LD4 / IM-3LD4D

| Eyepiece | | 10x (M-780) | | |
|-------------------|------|-------------|---------------------|--------------------|
| Field number (mm) | 22 | | | |
| Objective | N.A. | W.D. (mm) | Total magnification | Field of view (mm) |
| 4x | 0.13 | 18.52 | 40x | 5.50 |
| 10x | 0.30 | 7.11 | 100x | 2.20 |
| 20x | 0.45 | 5.91 | 200x | 1.10 |
| 40x | 0.65 | 1.61 | 400x | 0.55 |
| 60x | 0.75 | 1.04 | 600x | 0.37 |

IM-3MET / IM-3METLD

| Eyepiece | | 10x (M-780) | | | 15x (M-601) | |
|-------------------|------|-------------|---------------------|--------------------|---------------------|--------------------|
| Field number (mm) | 22 | | | 16 | | |
| Objective | N.A. | W.D. (mm) | Total magnification | Field of view (mm) | Total magnification | Field of view (mm) |
| 5x | 0.15 | 10.80 | 50x | 4.40 | 75x | 3.20 |
| 10x | 0.30 | 10 | 100x | 2.20 | 150x | 1.60 |
| 20x | 0.45 | 4 | 200x | 1.10 | 300x | 0.80 |
| 50x | 0.55 | 7.90 | 500x | 0.44 | 750x | 0.32 |
| 100x | 0.80 | 2.10 | 1000x | 0.22 | 1500x | 0.16 |

IM-3 Series - Accessories

Eyecups & Eyepieces

- M-601 WF15x/16 eyepiece, high eyepoint
- M-780 PL10x/22 eyepiece, high eyepoint, with rubber cup
- M-781 PL10x/22 micrometric eyepiece, high eyepoint, with rubber cup

Objectives

IOS W-PLAN

- M-1049 IOS W-PLAN objective 2x/0.08
- M-782 IOS LWD W-PLAN objective 4x/0.10
- M-773 IOS LWD W-PLAN objective 40x/0.60
- M-786 IOS LWD W-PLAN objective 60x/0.70

IOS W-PLAN PH

- M-782.1 IOS LWD W-PLAN PH objective 4x/0.13
- M-783N IOS LWD W-PLAN PH objective 10x/0.25
- M-784N IOS LWD W-PLAN PH objective 20x/0.40
- M-785 IOS LWD W-PLAN PH objective 40x/0.65

IOS U-PLAN F

- M-800 IOS LWD U-PLAN F objective 4x/0.13
- M-801 IOS LWD U-PLAN F objective 10x/0.30
- M-802 IOS LWD U-PLAN F objective 20x/0.45
- M-803 IOS LWD U-PLAN F objective 40x/0.65
- M-804 IOS LWD U-PLAN F objective 60x/0.75

IOS U-PLAN F PH

- M-1177 IOS LWD U-PLAN F PH objective 20x/0.45
- M-1178 IOS LWD U-PLAN F PH objective 40x/0.65

IOS U-PLAN MET

- M-1100 IOS LWD U-PLAN MET objective 5x/0.15
- M-1101 IOS LWD U-PLAN MET objective 10x/0.30
- M-1102 IOS LWD U-PLAN MET objective 20x/0.45
- M-1103 IOS LWD U-PLAN MET objective 50x/0.55
- M-1104 IOS LWD U-PLAN MET objective 100x/0.80 (dry)

IOS LWD U-PLAN RPC

- M-861 IOS LWD U-PLAN RPC objective 4x/0.13
- M-862 IOS LWD U-PLAN RPC objective 10x/0.25
- M-863 IOS LWD U-PLAN RPC objective 20x/0.40
- M-864 IOS LWD U-PLAN RPC objective 40x/0.65

Attachments

- M-797 HBO fluo attachment, 2-pos. (B & G filter set), EU (only for IM-3)
- M-798 HBO fluo attachment, 4-pos. (B & G filter set), EU (only for IM-3)

Stages

- M-792 Mechanical stage
- M-792.2 Mechanical stage (for IM-3LD2 only)

Condensers & Filters

- M-676 Empty fluorescence filterblock (only for IM-3F)
- M-677 Fluorescence filter set V (filterblock included) (only for IM-3F)
- M-677.1 Fluorescence filter set V (filterblock NOT included) (only for IM-3F & IM-3FL4)
- M-677ND Neutral density filter, 25% transmission (only for IM-3F & IM-FL4)
- M-678 Fluorescence filter set UV-DAPI (filterblock included) (only for IM-3F)
- M-678.1 Fluorescence filter set UV-DAPI (filterblock NOT included) (only for IM-3F & IM-3FL4)
- M-678ND Neutral density filter, 50% transmission (only for IM-3F & IM-3FL4)
- M-1230 Blue LED Fluorescence Cube (LED+Filterset), for IM-3LD4
- M-1230.1 Blue (pass band)LED Fluorescence Cube (LED+Filterset), for IM-3LD4
- M-1231 Green LED Fluorescence Cube (LED+Filterset), for IM-3LD4
- M-1231.1 Green (pass band) LED Fluorescence Cube (LED+Filterset), for IM-3LD4
- M-1232 Violet LED Fluorescence Cube (LED+Filterset), for IM-3LD4
- M-1233 UV LED Fluorescence Cube (LED+Filterset), for IM-3LD4
- M-1233.1 UV (pass band) LED Fluorescence Cube (LED+Filterset), for IM-3LD4
- M-1234 Red 1 LED Fluorescence Cube (LED+Filterset), for IM-3LD4
- M-1235 Red 2 LED Fluorescence Cube (LED+Filterset), for IM-3LD4
- M-1236 Deep Red LED Fluorescence Cube (LED+Filterset), for IM-3LD4
- M-1237 Far Red LED Fluorescence Cube (LED+Filterset), for IM-3LD4
- M-1238 Amber LED Fluorescence Cube (LED+Filterset), for IM-3LD4

Camera Adapters

- M-113.1 Ring adapter, 30mm (for monocular and binocular microscopes)
- M-115 0.35x C-Mount projection lens
- M-114 0.5x C-Mount projection lens
- M-118 0.75x C-Mount projection lens
- M-173 C-Mount projection lens for APS-C/full frame reflex cameras (trino)
- M-620 0.35x focusable C-Mount adapter (biological microscopes)
- M-620.1 0.5x focusable C-Mount adapter (biological microscopes)
- M-620.2 0.65x focusable C-Mount adapter (biological microscopes)
- M-620.3 1x focusable C-Mount adapter (biological & stereomicroscopes)
- M-699 Universal adapter for C-Mount projection lens (trino)

Miscellaneous

- 15104 Cleaning kit
- DC-004 TNT dust cover, large, 700(l)x550(h) mm
- M-005 Micrometric slide, 26x76mm, with 2 scales (1mm/100 & 10mm/100)
- M-151 HBO 100W high-pressure mercury bulb for fluorescence (only for IM-3F & IM-3FL4)
- M-151.1 HBO 100W high-pressure mercury bulb for fluorescence (OSRAM) (only for IM-3F & IM-3FL4)
- M-622 Halogen bulb 12V/50W (only for IM-3MET)
- M-785.2N Slider with phase rings (4x/10x, 20x/40x, BF) (except for IM-3MET)
- M-793.1 Holder for Petri 38mm diameter (M-793.2 needed) (except for IM-3MET)
- M-793.2 Holder for Terasaki and Petri 65mm diameter (except for IM-3MET)
- M-793.3 Holder for slides and Petri 54mm diameter (except for IM-3MET)
- M-793.4 Holder for 2+2 slides (except for IM-3MET)
- M-793.5 Holder for metallurgical samples (only for IM-3MET)
- M-793.6 Holder for Utermohl-Chamber (M-793.3 needed) (except for IM-3MET)
- M-793.7 Load bearing side extension
- M-860 Slider with rotating 10x-20x-40x OPTIKA Modulation Contrast slit
- M-860.1 Slider with rotating 4x OPTIKA Modulation Contrast slit
- M-1004.N Centering telescope, 30mm diameter
- VP-IM3 IQ/OQ/PQ manual for IM-3 series
- AB-030 Antibacterial surface treatment, only for newly purchased microscope

15104 - Cleaning kit

It cleans glass quickly and effectively, without leaving residue or odor. Ideal for precision lens or prism cleaning.



How to connect the cameras to our microscopes.

Please refer to the Adapter reference list on Digital section.

v 6.7 - OPTIKA reserves the right to make corrections, modifications, enhancements, improvements and other changes to its products at any time without notice.

Headquarters and Manufacturing Facilities

OPTIKA® S.r.l. Via Rigla, 30 - 24010 Ponteranica (BG) - ITALY - Tel.: +39 035.571.392 - info@optikamicroscopes.com

Optika Sales branches

OPTIKA® Spain spain@optikamicroscopes.com

OPTIKA® China china@optikamicroscopes.com

OPTIKA® India india@optikamicroscopes.com

OPTIKA® USA usa@optikamicroscopes.com

OPTIKA® Central America camerica@optikamicroscopes.com